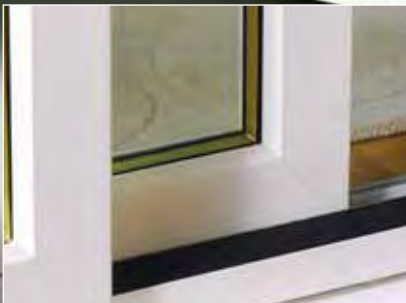


HADLEY ROLLFORM SECTIONS



HADLEY
GROUP

ROLLFORM SECTIONS LIMITED

UltraSTEEL™

PVC-u

**WINDOW & DOOR
REINFORCEMENT**

The Hadley group are one of the foremost suppliers of galvanised steel reinforcement sections producing millions of metres each year for the U.K and European PVC-u Window, Door and Conservatory market.

ADVANTAGES:

- We provide a comprehensive technical advice service, aided by world class design, toolmaking & test facilities.
- State-of-the-art manufacturing facilities pre pierced, cut to length.
- Ink Jet and bar coding identification.
- Comprehensive range of standard sections.
- Fast and flexible response.
- Major supplier to system companies and fabricators.
- **UltraSTEEL™** technology to value engineer your products and reduce material content without compromising structural and screw retention performance and enhance thermal performance.

CONSTRUCTION
DATARS02

UltraSTEEL™

PVC-u

WINDOW AND DOOR REINFORCEMENT

PVC-u window and door reinforcements have been revolutionised by the introduction of the Hadley Groups' UltraSTEEL™ process which offers the potential to reduce raw material content without compromising the important areas of structural performance and screw retention.

Furthermore, our world class design and manufacture facilities enable us to create bespoke solutions and offer a comprehensive range of standard sections to suit most system company and fabricator requirements.

Together, our UltraSTEEL™ process and our world class design techniques will serve to drive down your material costs without compromising on the efficiency and strength of the material. We provide a comprehensive technical advisory service to those companies seeking cost-down solutions to meet specific engineering and production needs.



UltraSTEEL™

PVC-u

WINDOW REINFORCEMENT

PVC-u WINDOW REINFORCEMENT

The Hadley Group is now one of the foremost suppliers of galvanised steel reinforcement sections for the PVC-U window industry, rolling millions of linear metres each year for a long list of distinguished companies, many of them household names. Our customers have learned that, while we never compromise on quality we have been able to provide a product which is cost efficient.

Our dedicated in-house design engineers, using our tried and tested world class cold roll forming expertise, ensure that any fully effective shape configuration is possible.

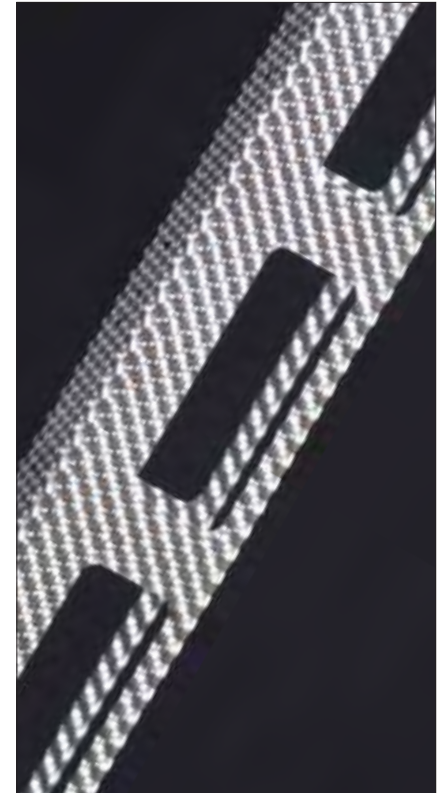
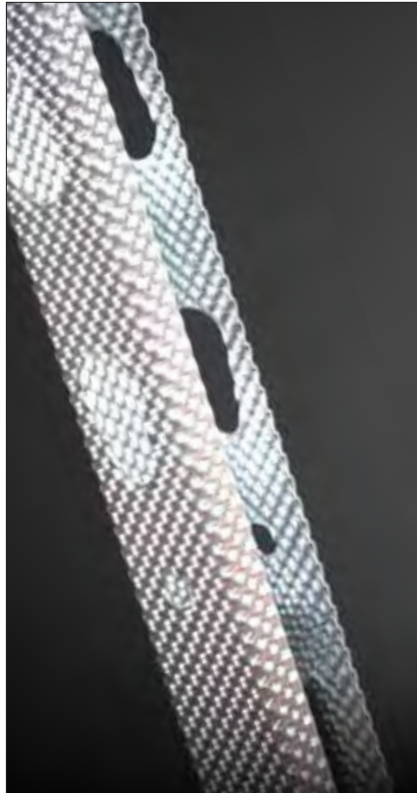
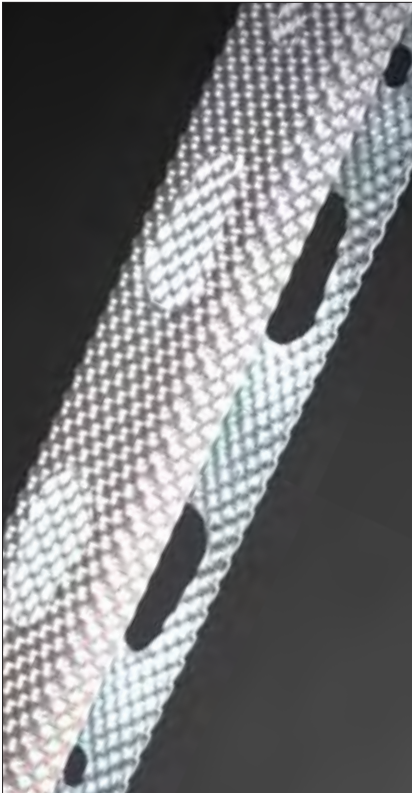
We are proud to have taken this market sector to another level and we continue to invest in the highest technologies available to provide, better, stronger and more sustainable supply solutions on an on-going basis.



UltraSTEEL™ + Design = Strength – Cost

BENEFITS INCLUDE:

- STATE OF THE ART MANUFACTURING FACILITIES
- ALL PLANT AND TOOLS PRODUCED IN-HOUSE TO THE HIGHEST LEVEL OF QUALITY AND SPECIFICATION
- ALL CUT LENGTHS ARE PRESS CUT NOT SAWN, ENSURING A CLEAN ZINC PROTECTED END CUT.
- MOST MATERIAL GRADES AVAILABLE INCLUDING STAINLESS BOX PROFILES AND CHANNEL SECTIONS AVAILABLE FROM STANDARD UNIVERSAL TOOLING.
- INK JET IDENTIFICATION ENABLES THE CUSTOMER TO HAVE THE FACILITY TO INCLUDE THEIR NAME OR PART NUMBER, DATE OF MANUFACTURE, LENGTH OR ANY COMBINATION (THIS IS SUBJECT TO THE LENGTH AND CHARACTER SIZE).



UltraSTEEL™ PVC-u & COMPOSITE DOOR REINFORCEMENT

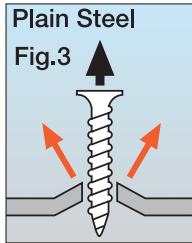
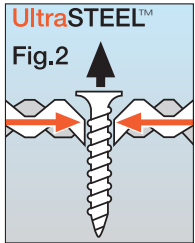
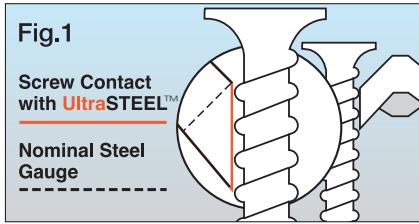
PVC-u & COMPOSITE DOOR REINFORCEMENT

We are market leaders in pre-pierced door post technology. Utilising our ability to pierce in 3 faces if required including closed joint box profiles, the door posts can also be cut to length on-line to suit the door size.

Historically many door posts in the market are either post-operation pierced or alternatively laser cut. Both of these options are extremely costly in comparison to our efficient pre-pierced alternative.



UltraSTEEL™ PROCESS



CONNECTION WITH MORE MATERIAL

The UltraSTEEL™ cross-section ensures that every screw is in contact with a material thickness greater than the nominal gauge of the steel. (Fig. 1)

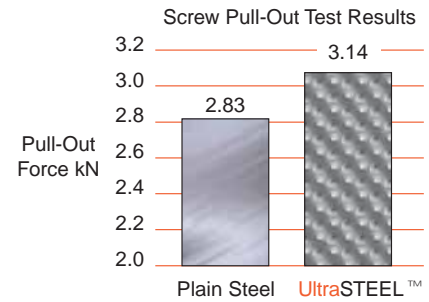
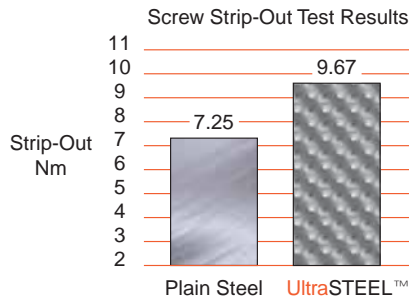
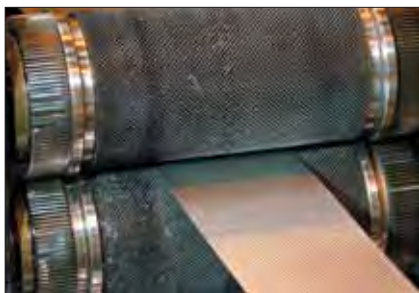
RESISTANCE TO PULL-OUT

The location of screws within UltraSTEEL™ material creates inward pressure around the point of contact as a pull-out force is applied. (Figs. 2-3).

Independent tests demonstrate a minimum 15% improvement in screw retention - a distinct advantage in today's security market.

INCREASED TENSILE STRENGTH

Improvement in mechanical properties by work hardening the entire surface of the strip, therefore increasing the tensile strength allowing a much greater load bearing capacity.



COST BENEFITS UltraSTEEL™

Using our world class technical facility we can value engineer cost-out savings via a reduction in necessary material thickness. The primary benefit of the UltraSTEEL™ process is therefore the reduction in raw material costs.

ENHANCED THERMAL PERFORMANCE

The reduction in material thickness achieved by the UltraSTEEL™ process can enhance the Thermal Performance of the reinforcement section.

BRAND IDENTITY/AESTHETICS

The surface finish gives the section a unique appearance, reduces glare and minor imperfections in the steel strip.

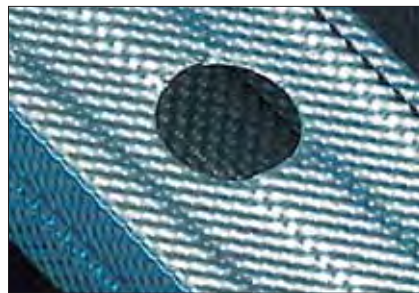
IMPACT RESISTANCE

Higher localised work hardening and strengthening reduces the potential for damage during handling and minimises the potential for waste.

PATENTED PRODUCT

The UltraSTEEL™ process is an internationally patented product. It has been developed over several years of extensive research and development.

The Hadley Group policy of continuous improvement ensures that its commercial advantages are maximised for the benefit of our valued customer base.



WORLD RECOGNITION:

As if that wasn't enough, in 2006 we were awarded the Queen's Award for Enterprise: Innovation for our UltraSTEEL™ process. This endorses the commitment to research and development that lies at the heart of our business.



ROLLFORM SECTIONS LIMITED

www.hadleygroup.co.uk

P.O. Box 92, Downing Street, Smethwick, West Midlands, B66 2PA
Telephone: +44 (0) 121 555 1310
Fax: +44 (0) 121 555 1311
E-mail: rs@hadleygroup.co.uk



FM. 13512