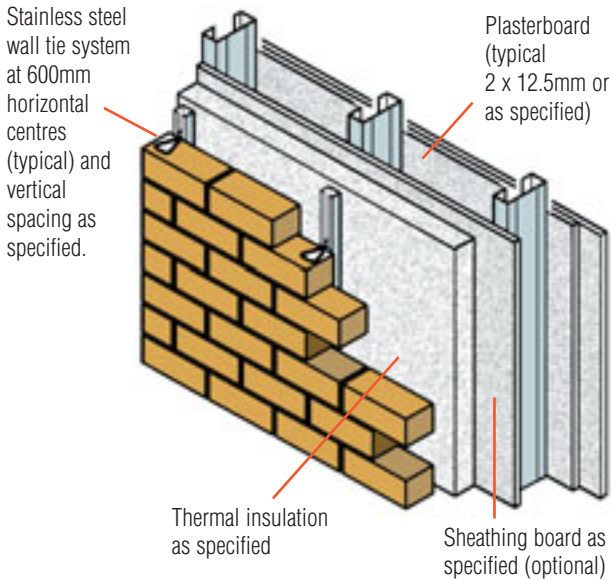
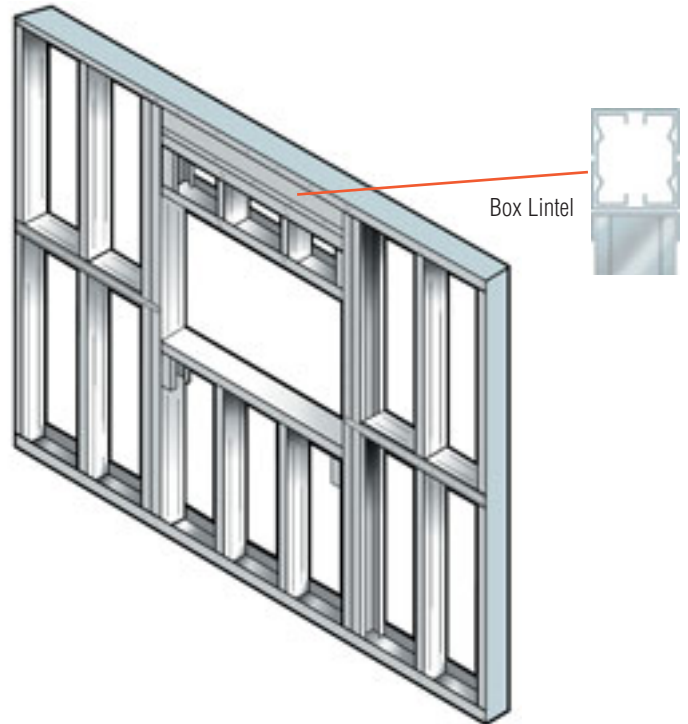


TYPICAL WALL CONSTRUCTION USING BRICK CLADDING IN WARM FRAME CONSTRUCTION



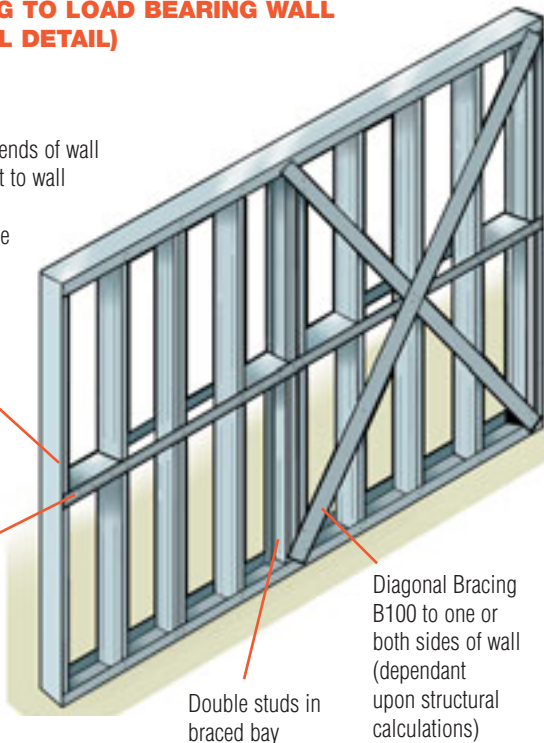
LOAD BEARING WALL OPENING (TYPICAL DETAIL)



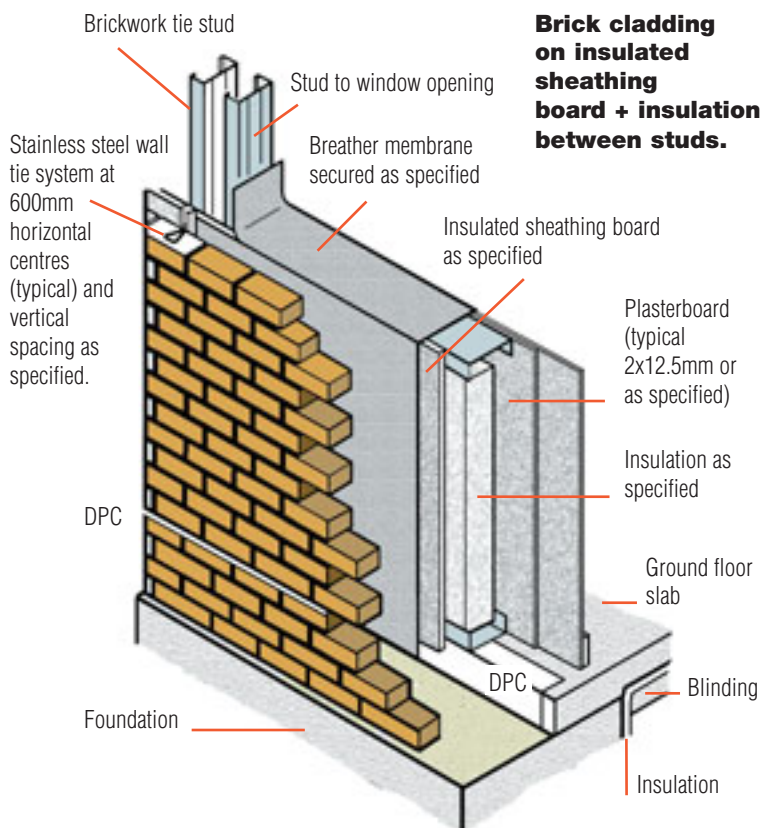
BRACING TO LOAD BEARING WALL (TYPICAL DETAIL)

Blocking at ends of wall and adjacent to wall openings. Max distance between blocking 2400mm

Lateral Bracing B38.



TYPICAL WALL CONSTRUCTION AND GROUND-BEARING SLAB



Brick cladding on insulated sheathing board + insulation between studs.